

## INDOOR CLIMATE SOLUTIONS

Offices / Hotels /  
Entertainment /  
Public spaces

**Halton**



## Editorial

Can there be art without technology?

An expansive question whose answer would be difficult to discern. What seems to be certain, however, is that art begins where technology ends. Both in the sense that there are no longer any predefined rules, and that technology becomes so refined that it can no longer be perceived.

Thus, understanding and accepting any constraints, and using professional expertise to transform them into assets makes it possible to undertake great projects and create buildings that are truly a product of their time.

Through a systematic approach to products and systems, and its mastery of ventilation and aeraulics, Halton provides a fresh perspective on your problems, and guides you through a sustainable philosophy of building well to be well.



# From individuals products...

A story of ventilation. Transforming constraints into assets. Stimulating comfort. And giving birth to artistic creations.

A COHERENT APPROACH WITH FULL INTEGRATION OF FORM AND MATERIALS.

AIR FLOW IS TAILORED TO ARCHITECTURAL DETAIL.

WHERE ELEGANCE MEETS PERFORMANCE.

AND YOUR DREAMS TAKE SHAPE.



01

# A coherent approach with full integration of form and materials

## WHY COMPROMISE PERFORMANCE FOR AESTHETICS?

— Whether renovating a historical building or building a futuristic development, the choice of materials is of prime importance, including ventilation. If the quality of air circulation is linked to the quality of materials, then several factors are at play.

## WHILE MATERIALS CAN INCLUDE SEVERAL FACTORS

— Colours, finishes, shapes... The multitude of combinations available in the Halton grill range provides boundless opportunities for creation and the possibility to find the perfect combination of the solid and the fluid.

# A story of ventilation



GOLDEN GRILLE /  
A grill that has been anodized  
in a process used in luxury  
industries for perfect  
rendering and finish, suitable  
for use in all situations.



# 02


## Air flow is tailored to architectural detail

### EACH LOCATION IS CONSIDERED A LIVING SPACE

— Whether respecting what is already in place, or taking the decision to create something different, every m<sup>2</sup> must be an intelligent space where one can feel at ease, especially in areas where awkward angles make comfort seemingly impossible.

### THERE IS NO REASON TO IGNORE COMFORT

— With Halton's exclusive, market leading, diffusers, obtaining perfect interior air-conditioning has never been easier, and these diffusers give way to the lines in your plans.



CURVED SLOT DIFFUSER /  
Long range slot diffuser  
made to measure for a snug  
fit in all of your building's  
curves and recesses,  
guaranteeing unparalleled  
aeraulic performance.

Transforming  
constraints into assets

# 03

## Where elegance meets performance

### WHERE ELEGANCE MEETS PERFORMANCE

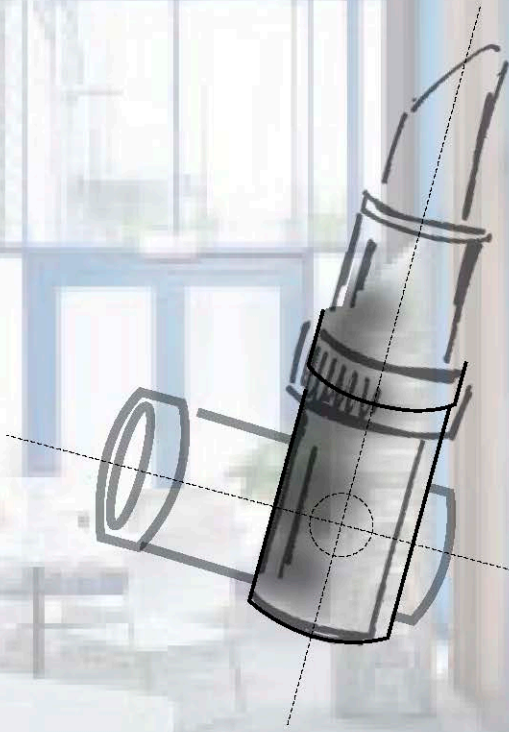
- Large or high spaces that accommodate a great number of people over time present a real challenge in terms of ventilation and comfort. Maintaining an adequate temperature by coupling efficiency and style deserves to be a talking point.

### IF YOU'VE GOT IT, FLAUNT IT

- Halton's low velocity units can adapt to all dimensions and shapes or become an integral part of a space's design, ensuring the circulation of air exclusively in the occupied area, therefore saving energy.



LIPSTICK DIFFUSER /  
Low velocity units in specific,  
discreet shapes to arouse  
curiosity and provide  
ventilation in lobbies  
and other large spaces.



Stimulating comfort

# 04

## And your dreams take shape

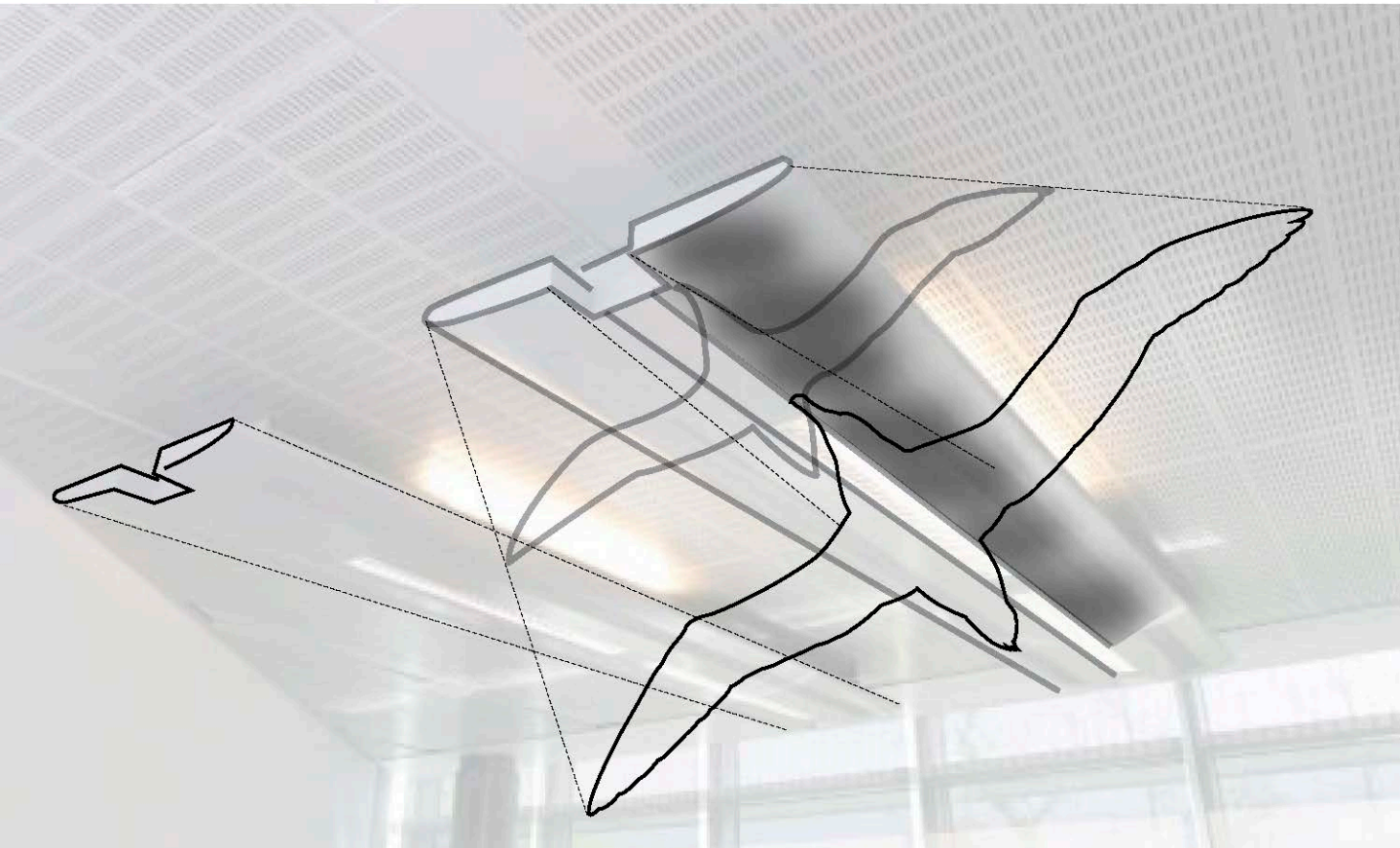
### TECHNOLOGY SHOULD NOT BE VIEWED AS A LIMITATION

- What is the purpose of technology and technological progress if not to be used at the service of all? This must be taken into account as today, imagination alone limits creativity.

### FIND THE FREEDOM TO CREATE

- Halton's flexibility, and its chilled beam air-conditioning manufacturing process, make almost all shapes and sizes possible for the most aesthetically pleasing ventilation of hotels, offices, or any other living space.

# And giving birth to artistic creations



**CHILLED BEAM /**  
Designed by Claude Vasconi,  
this beam remains faithful  
to the architect's aspiration  
to create a fresh atmosphere,  
inspired by nature, within  
a city office space.

# From individuals products...

When simple products are transformed into high





highly efficient systems, technology meets philosophy.



# ...to complete design

Ventilation that merges with its surroundings. Providing the zenith of aeraulic perfection. Boundless creation. Revealing the beauty of a perfect environment.

TURNING OBJECTS IN A(I)RT.

AWARENESS AND CONFIDENCE IN YOUR SYSTEMIC APPROACH.

TO CREATE ARCHITECTURALLY RICH INTERIORS.

AND MAKE ENERGY EFFICIENT BUILDINGS A REALITY.



# 05

## Turning objects in a(i)rt

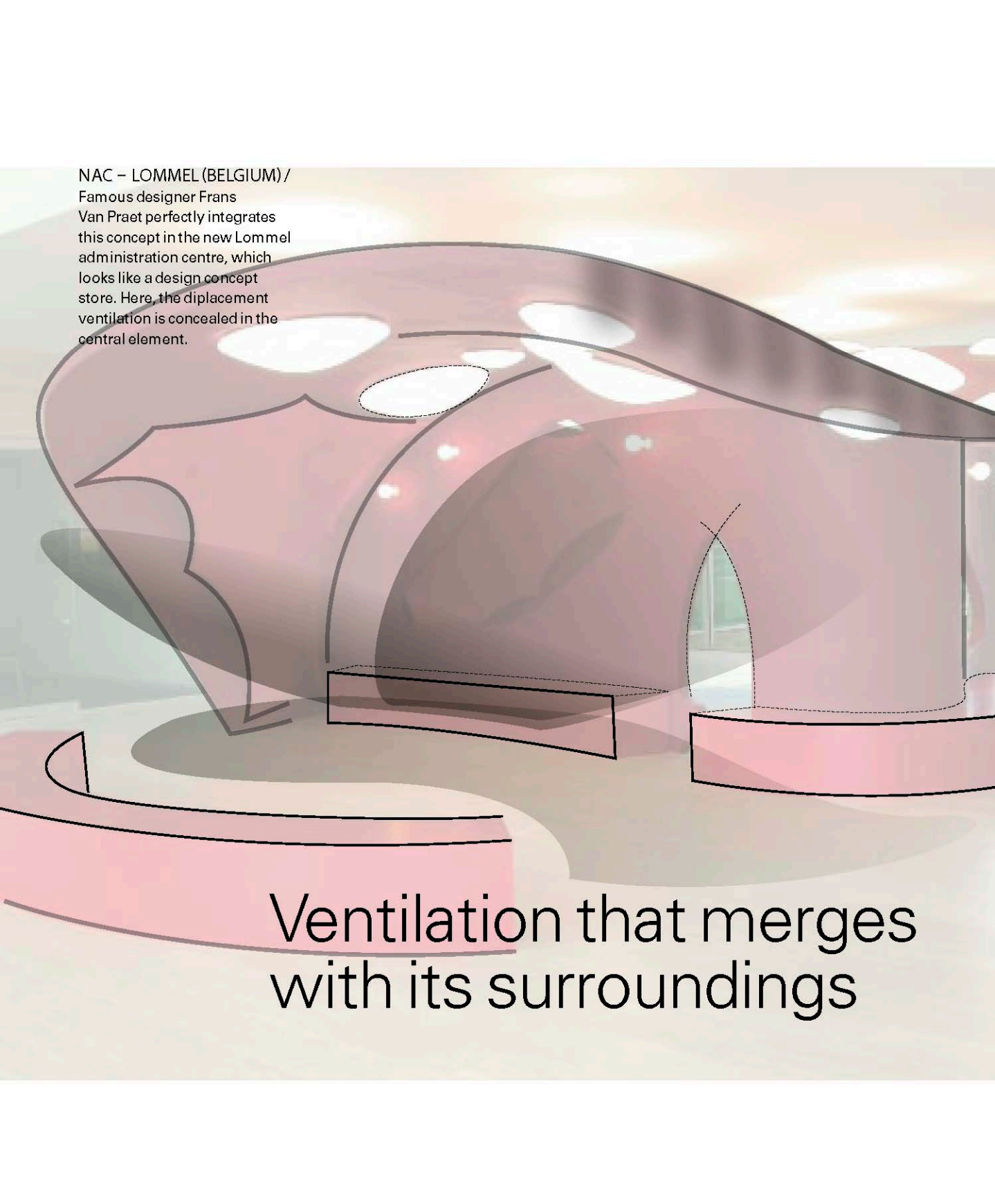
### IF EACH ROOM MUST HAVE ITS OWN INDIVIDUAL ROLE

- Creating simple, fun, functional spaces means that decisions have to be made, every room has its own role. However, in order to maintain its flexibility you can count on the objects that it contains.

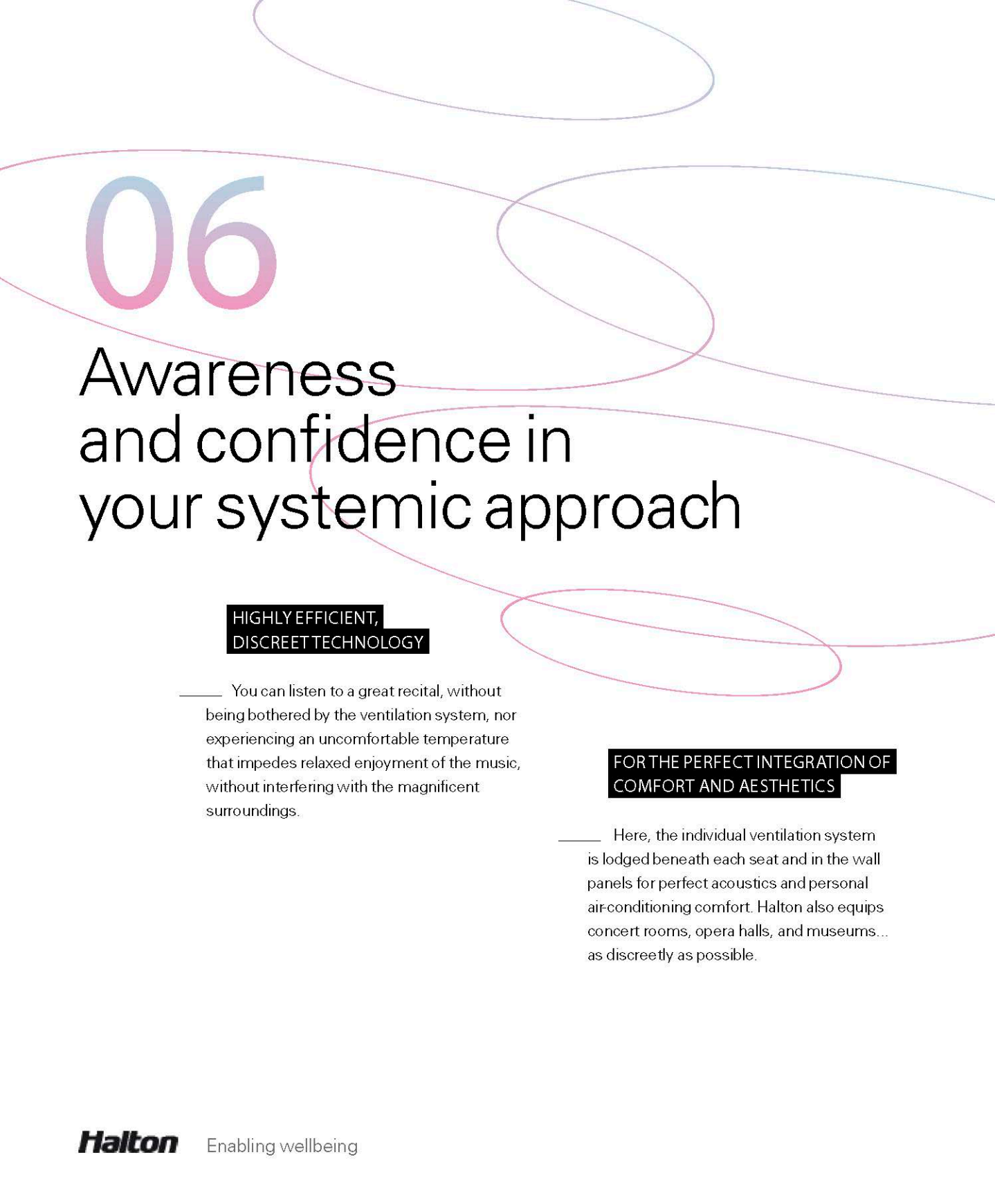
### CAN AN OBJECT CONCEAL MYSTERIES?

- A bench or desk can become sources of ventilation. Halton's designers are always available to suggest innovative solutions to conceal ventilation systems in the most common or surprising objects.

NAC – LOMMEL (BELGIUM) /  
Famous designer Frans  
Van Praet perfectly integrates  
this concept in the new Lommel  
administration centre, which  
looks like a design concept  
store. Here, the displacement  
ventilation is concealed in the  
central element.



Ventilation that merges  
with its surroundings



# 06

## Awareness and confidence in your systemic approach

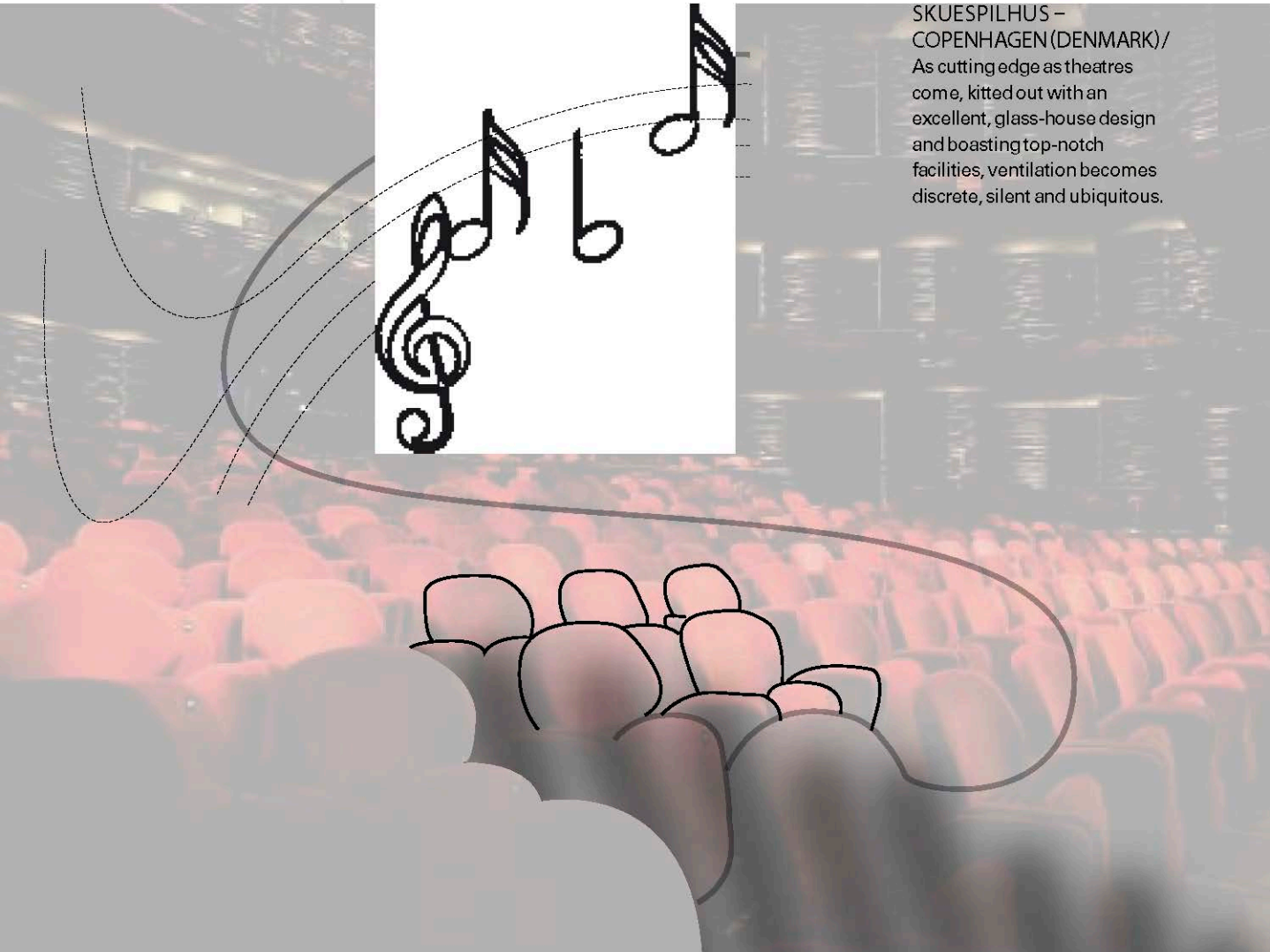
### HIGHLY EFFICIENT, DISCREET TECHNOLOGY

— You can listen to a great recital, without being bothered by the ventilation system, nor experiencing an uncomfortable temperature that impedes relaxed enjoyment of the music, without interfering with the magnificent surroundings.

### FOR THE PERFECT INTEGRATION OF COMFORT AND AESTHETICS

— Here, the individual ventilation system is lodged beneath each seat and in the wall panels for perfect acoustics and personal air-conditioning comfort. Halton also equips concert rooms, opera halls, and museums... as discreetly as possible.

# Providing the zenith of aeraulic perfection



SKUESPILHUS –  
COPENHAGEN (DENMARK)/  
As cutting edge as theatres  
come, kitted out with an  
excellent, glass-house design  
and boasting top-notch  
facilities, ventilation becomes  
discrete, silent and ubiquitous.



# 07

## To create architecturally rich interiors

### MADE TO MEASURE DIMENSIONS

— Flexibility, adaptability. These are the words that govern your creations. Fulfilling the needs and desires of those who will use the buildings. This ultimate purpose is the foundation for your daily work.

### EQUALLED ONLY BY YOUR CREATIVITY

— What is excess, if a partner is there to support your creations? You have Halton's full attention from the earliest stages of your architectural project, offering you greater freedom.





# Boundless creation

BUSINESS CATERING –  
BOEHRINGER INGELHEIM  
GmbH (GERMANY) /  
In an environment as  
modern as it is perfectionist,  
accustomed to irreproachable  
hygienic conditions,  
the ventilation's perfection  
is limitless.



# 08

## And make energy efficient buildings a reality

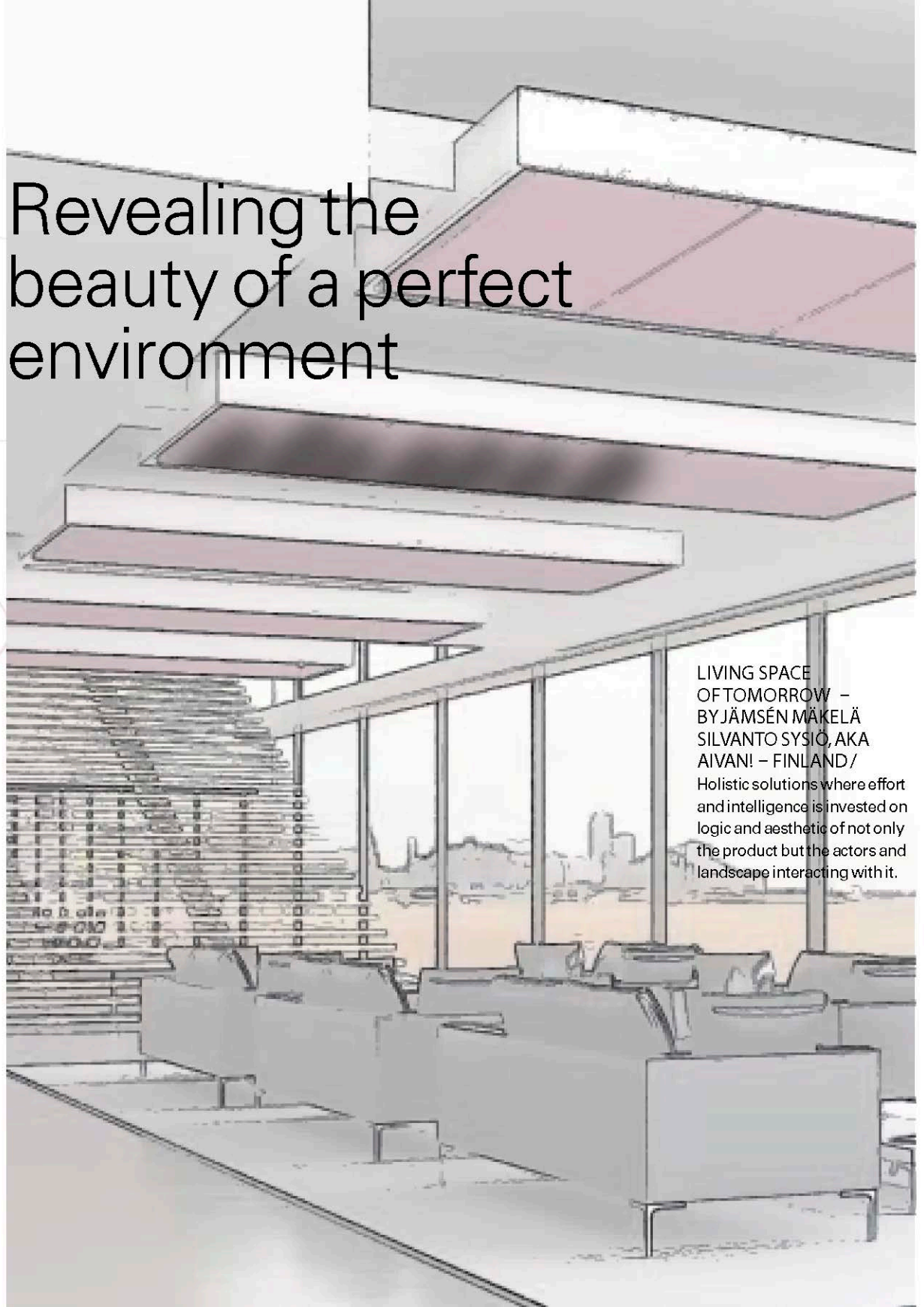
### TOMORROW IS BUILT TODAY

— Sustainable development, certified energy efficient buildings, energy savings...there are many considerations that may be difficult to satisfy, but ensure the longevity of buildings today and the quality of life tomorrow.

### ENERGY PERFORMANCE AS STANDARD

— In order to support you in this matter, Halton has made energy performance one of its fundamentals. Halton therefore guarantees the basis for construction that respects the well-being of all with its commitment to safety and the quality of the interior environment.

# Revealing the beauty of a perfect environment



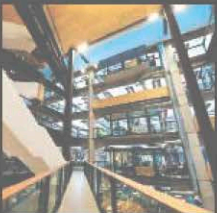
LIVING SPACE  
OFTOMORROW –  
BY JÄMSÉN MÄKELÄ  
SILVANTO SYSIÖ, AKA  
AIVAN! – FINLAND /

Holistic solutions where effort  
and intelligence is invested on  
logic and aesthetic of not only  
the product but the actors and  
landscape interacting with it.

# Halton

Halton is a Finnish family-owned company specialising in indoor climate products and solutions and in indoor environmental services. Halton creates safe and comfortable indoor environments with energy-efficient and sustainable life cycle.

We deliver solutions for applications ranging from public and commercial buildings to industry, commercial kitchen, and restaurant applications. Halton is also among the most renowned providers of indoor climate solutions for marine and offshore applications. All of our solutions are thoroughly researched and tailored for a variety of specific applications.

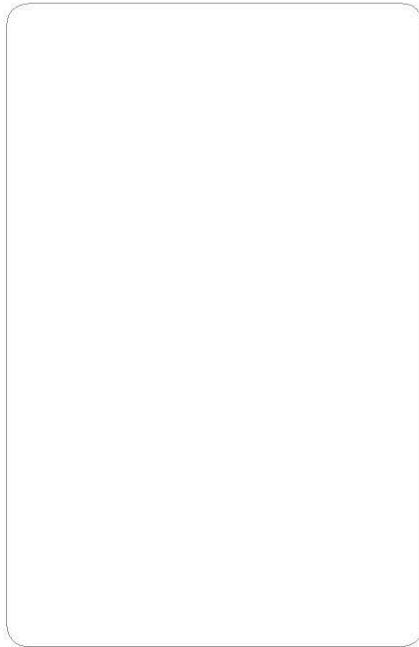


Enabling wellbeing

# Ventilation

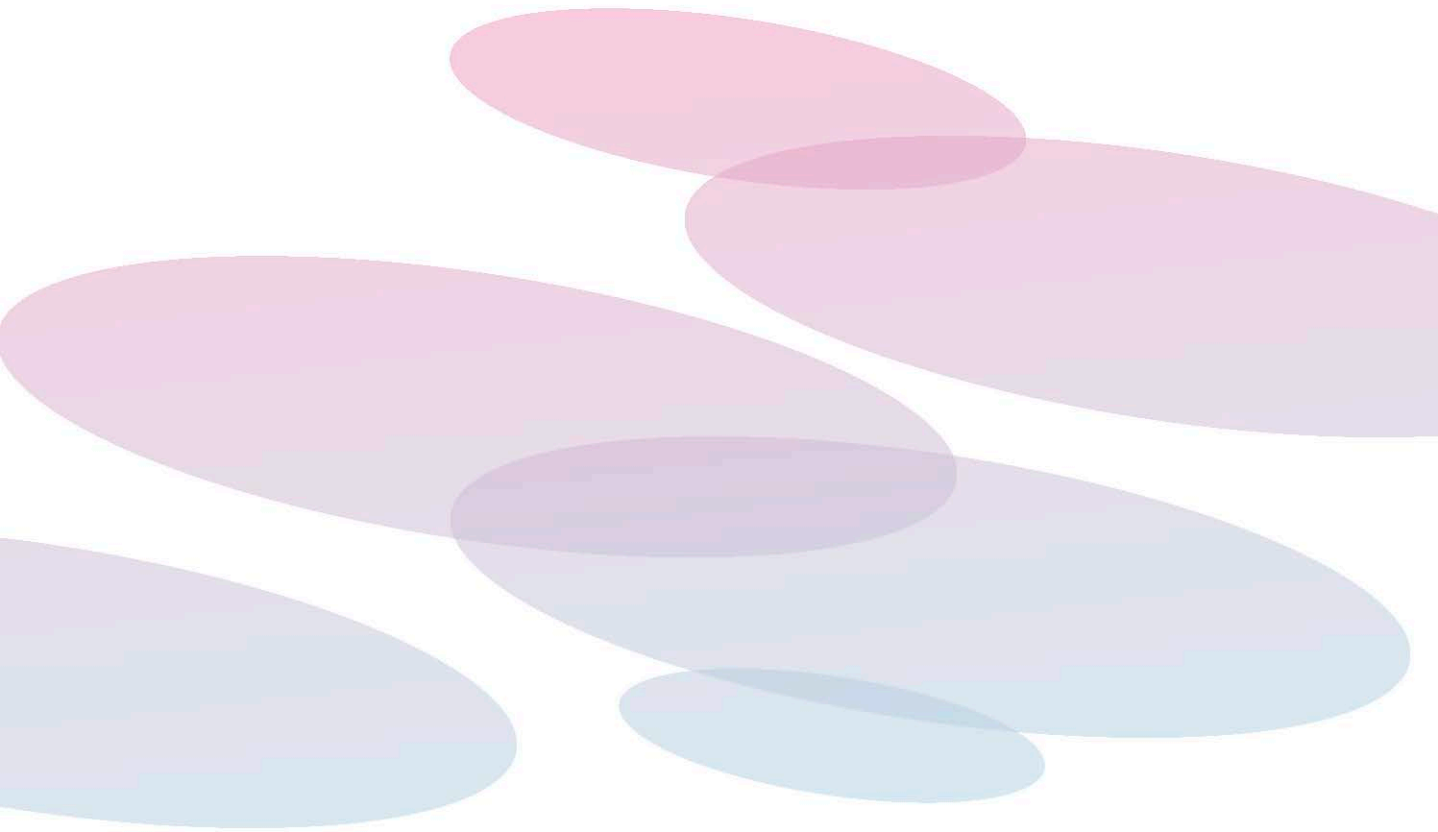
## Play one's trump card

Watch more



Rediscover it in your language





## INDOOR CLIMATE SOLUTIONS

Offices / Hotels / Entertainment / Public spaces